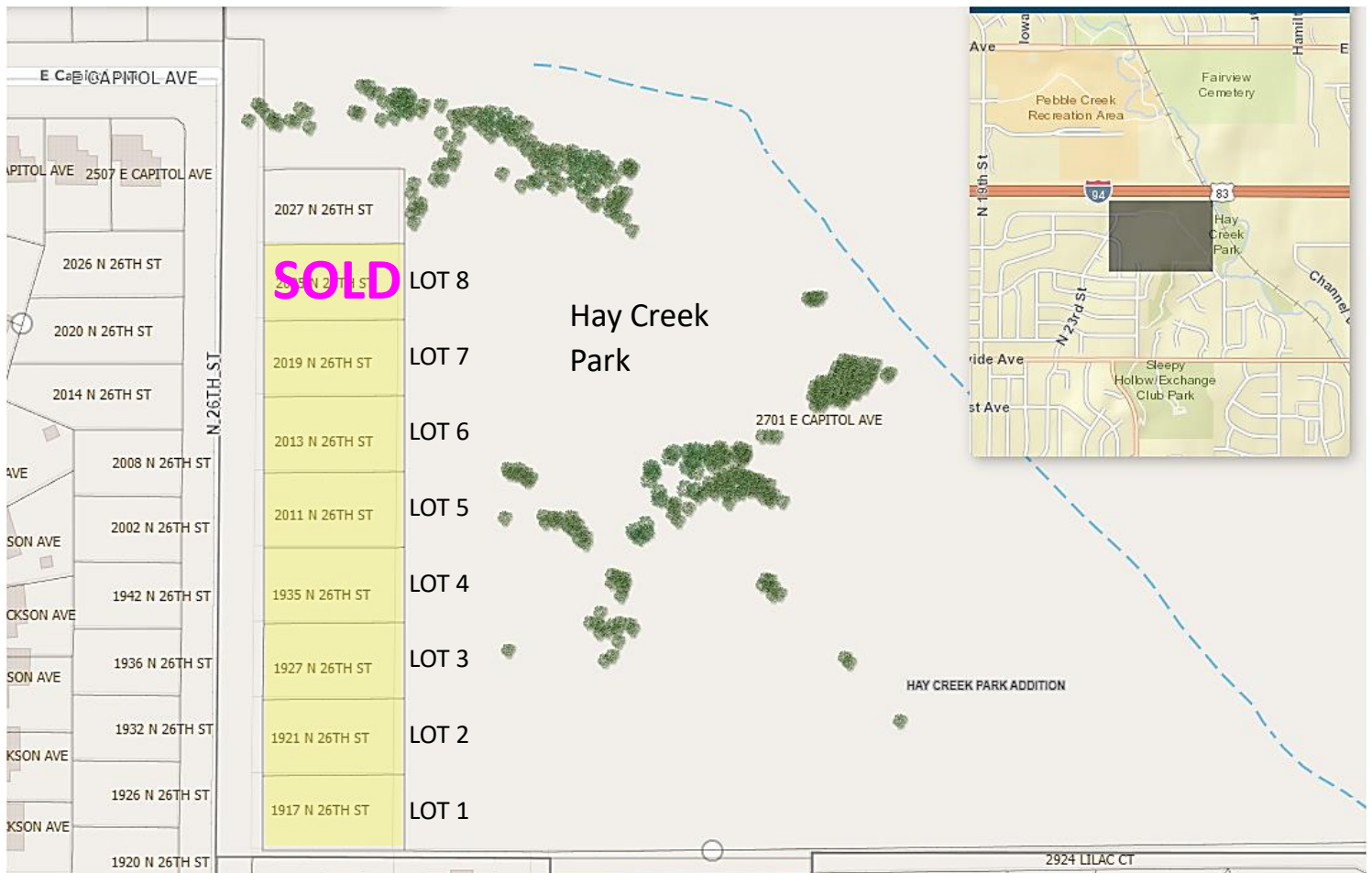




HAY CREEK PARK ADDITION PROPERTIES AVAILABLE FOR SALE

Contact Kevin Klipfel, Executive Director, for more information at 701-222-6455 or kklipfel@bisparcs.org

LOT NUMBER	LOT ADDRESS	PARCEL NUMBER	LEGAL DESCRIPTION	SIZE (square ft)	LOT DIMENSIONS
1	1917 N 26 th Street	2060-001-001	Lot 1, Block 1, Hay Creek Park Addition	12,000	80' X 150'
2	1921 N 26 th Street	2060-001-005	Lot 2, Block 1, Hay Creek Park Addition	12,000	80' X 150'
3	1927 N 26 th Street	2060-001-010	Lot 3, Block 1, Hay Creek Park Addition	12,000	80' X 150'
4	1935 N 26 th Street	2060-001-015	Lot 4, Block 1, Hay Creek Park Addition	12,000	80' X 150'
5	2011 N 26 th Street	2060-001-020	Lot 5, Block 1, Hay Creek Park Addition	12,000	80' X 150'
6	2013 N 26 th Street	2060-001-025	Lot 6, Block 1, Hay Creek Park Addition	12,000	80' X 150'
7	2019 N 26 th Street	2060-001-030	Lot 7, Block 1, Hay Creek Park Addition	12,000	80' X 150'
SOLD	2025 N 26th Street	2060-001-035	Lot 8, Block 1, Hay Creek Park Addition	12,000	80' X 150'



Map courtesy City of Bismarck GIS:

<https://bismarck.maps.arcgis.com/apps/Viewer/index.html?appid=f42f81670dea437f8744f348d213caed>