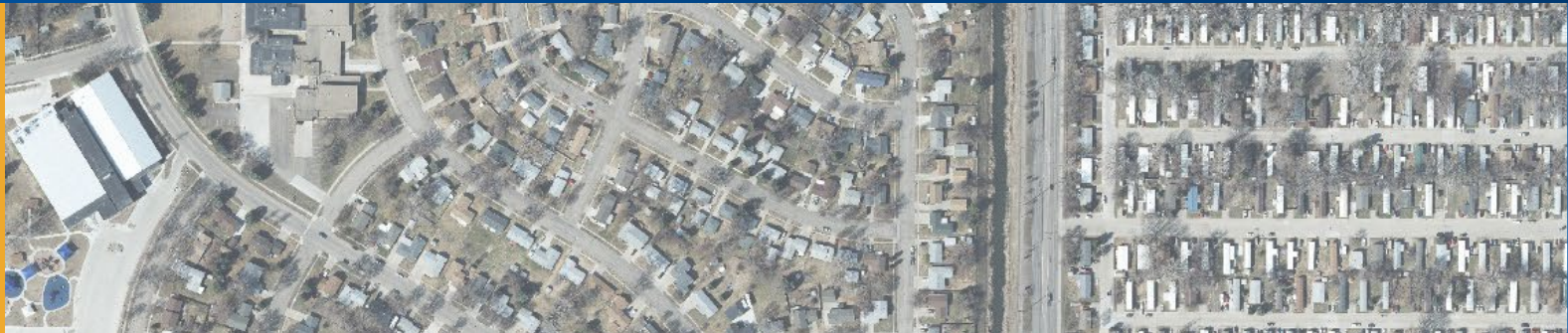




**BISMARCK PARKS AND RECREATION DISTRICT**  
Est. 1927

# South Bismarck Flood Control Clem Kelley Athletic Complex, Dakota Zoo and Sertoma Park Impacts



# Outline



- Project Overview
- Clem Kelley Athletic Complex, Dakota Zoo and Sertoma Park Impact Avoidance, Minimization, and Mitigation
- Funding and Timeline



Bismarck Expy

Kirkwood Mall

University Dr

S Washington St

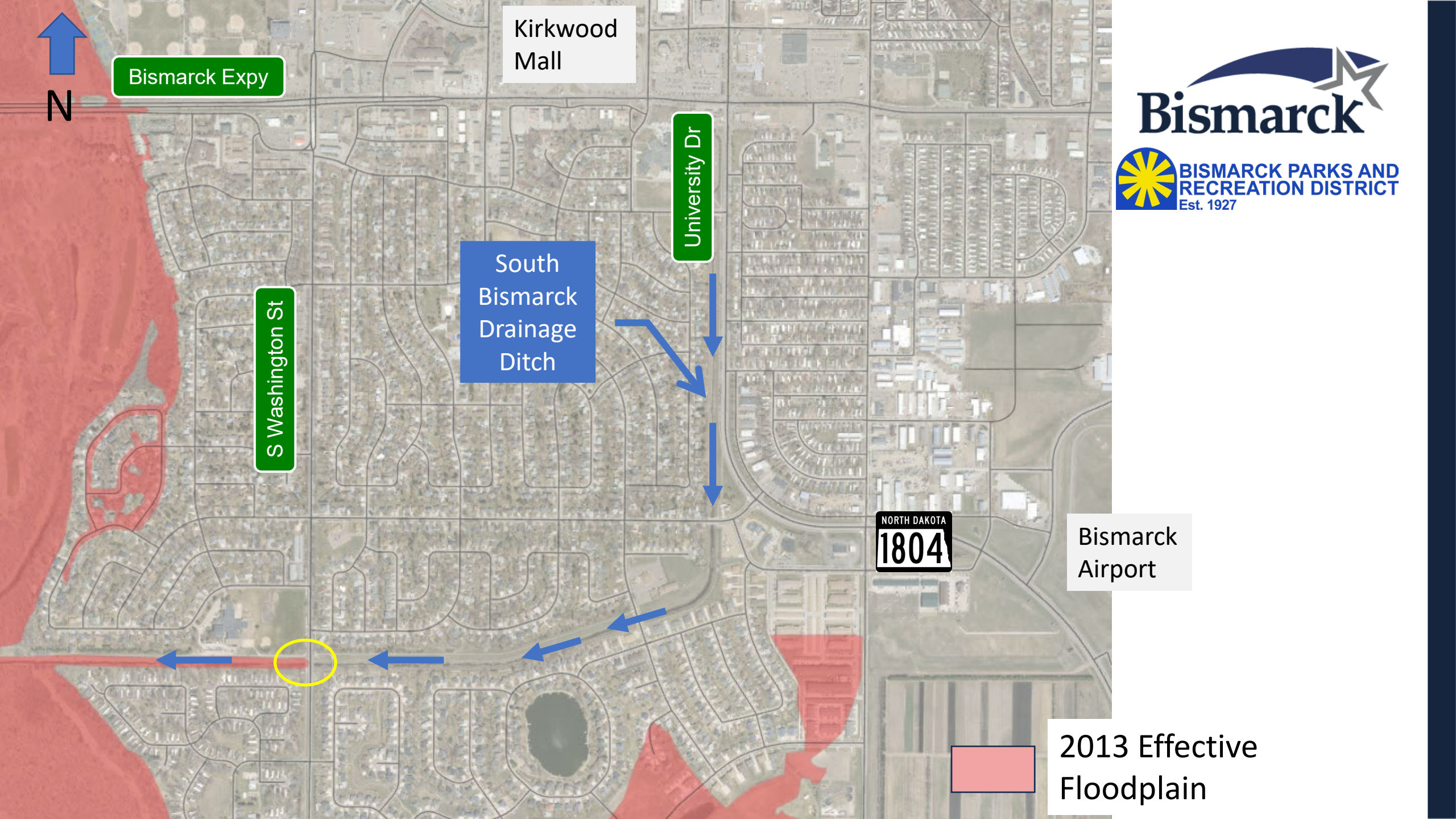
South Bismarck Drainage Ditch

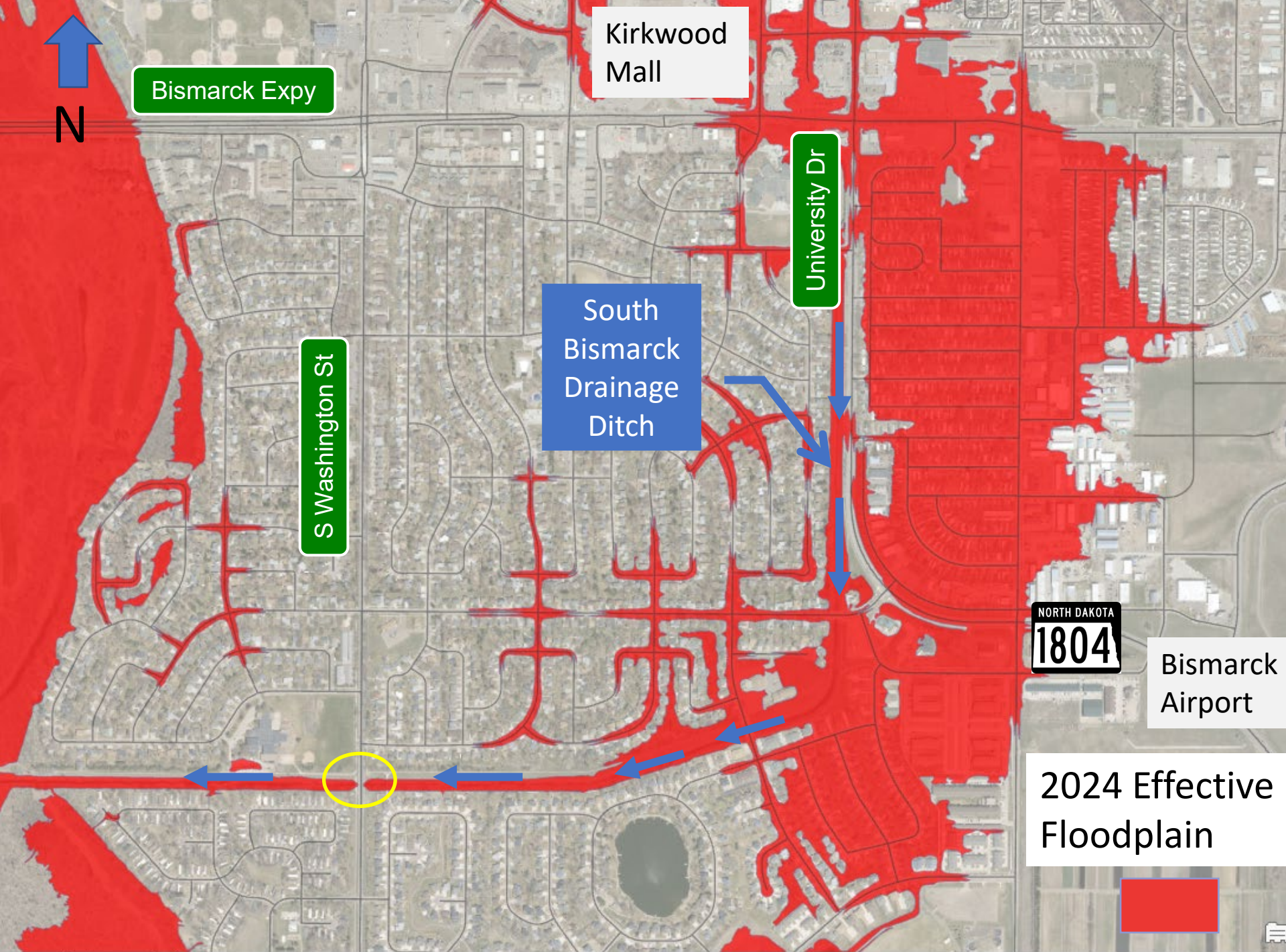
NORTH DAKOTA  
1804

Bismarck Airport

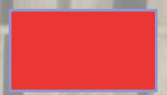


2013 Effective Floodplain



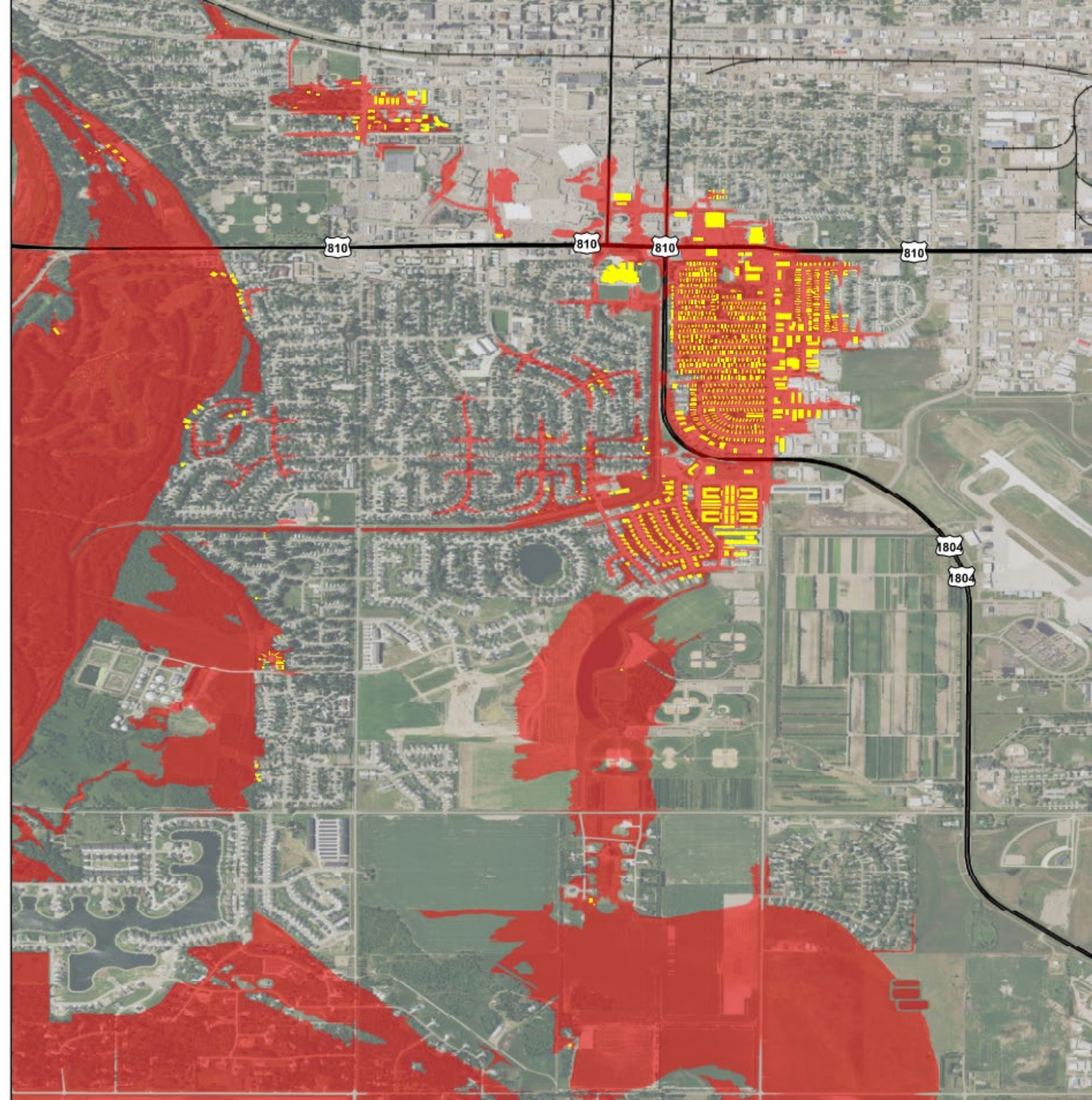


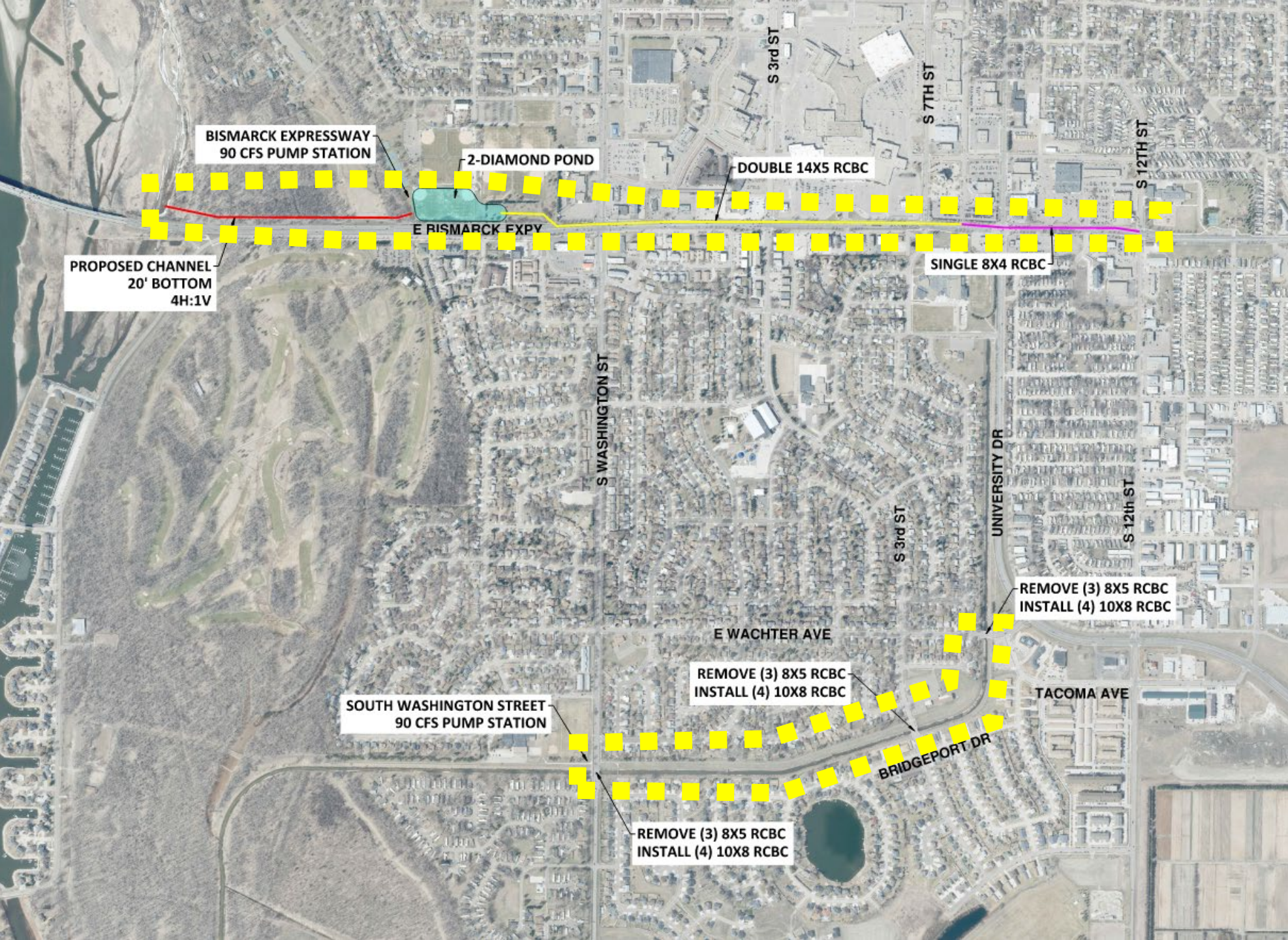
2024 Effective Floodplain



# Approximately 950 structures in South Bismarck are at risk of Flooding

- Schools
- Underserved Disadvantaged Communities
- Medical Facilities
- Businesses
- Critical Transportation, Electrical, Water and Waste-Water Infrastructure





# Flood Risk Reduction

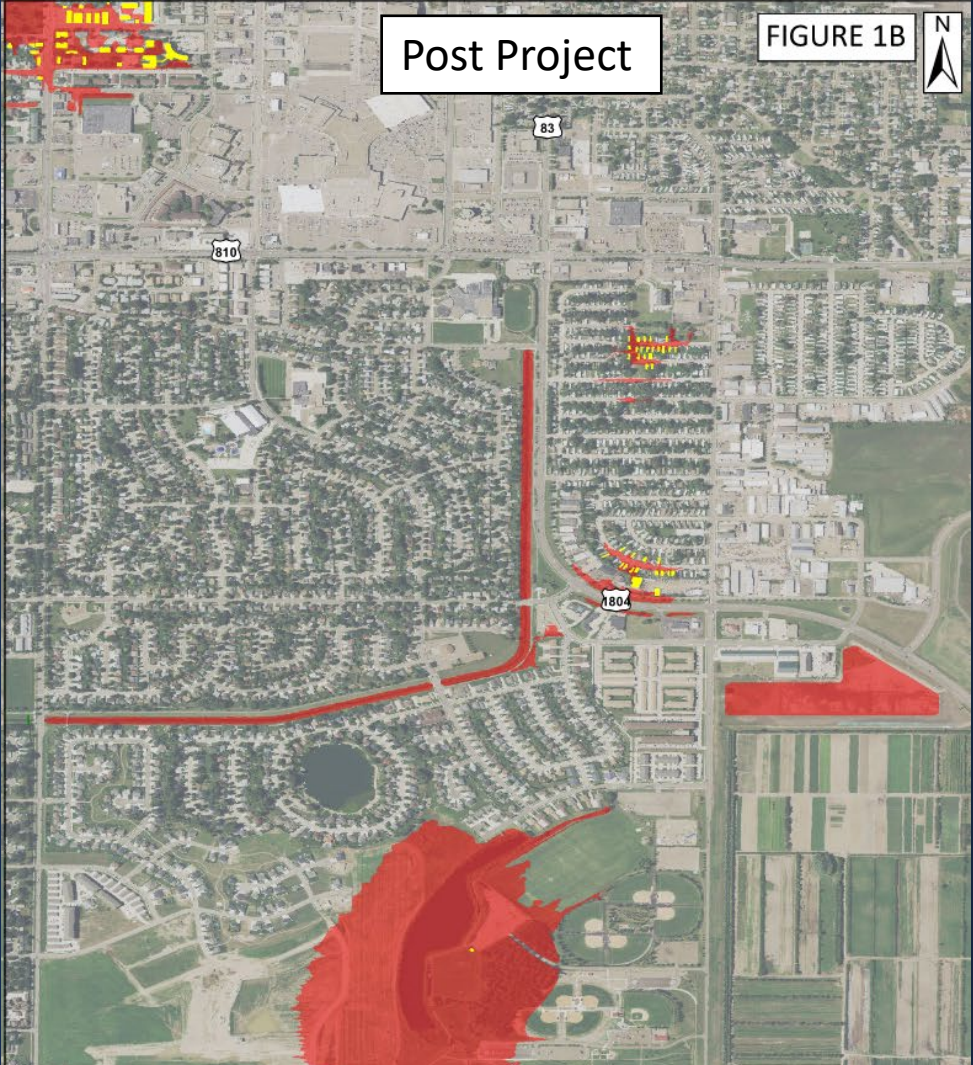
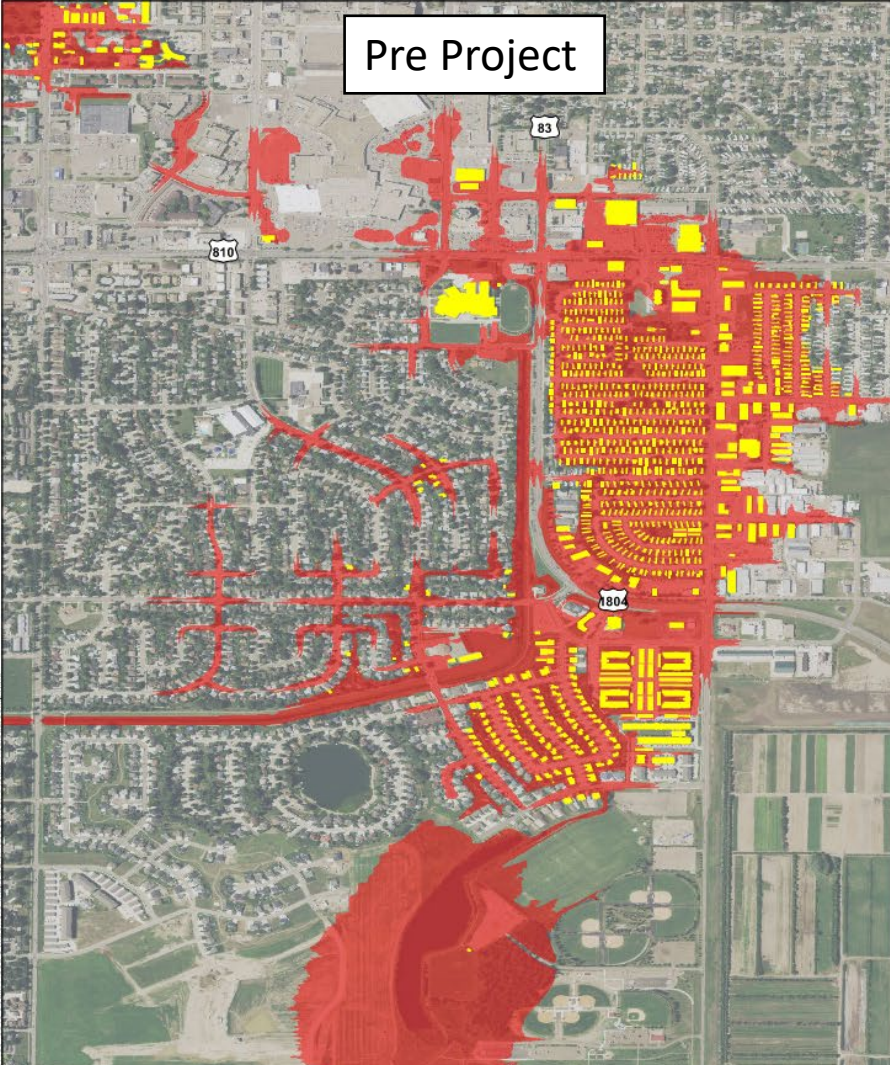


FIGURE 1B



ESR181 - UNAS SOURCE - 10001 - C:\PROJECTS\UNAS\SOURCE\10001\_0000 - KASSALI - 07/10/10



Outdoor  
Workout

Pickleball

Tennis

Parking

Ball Fields

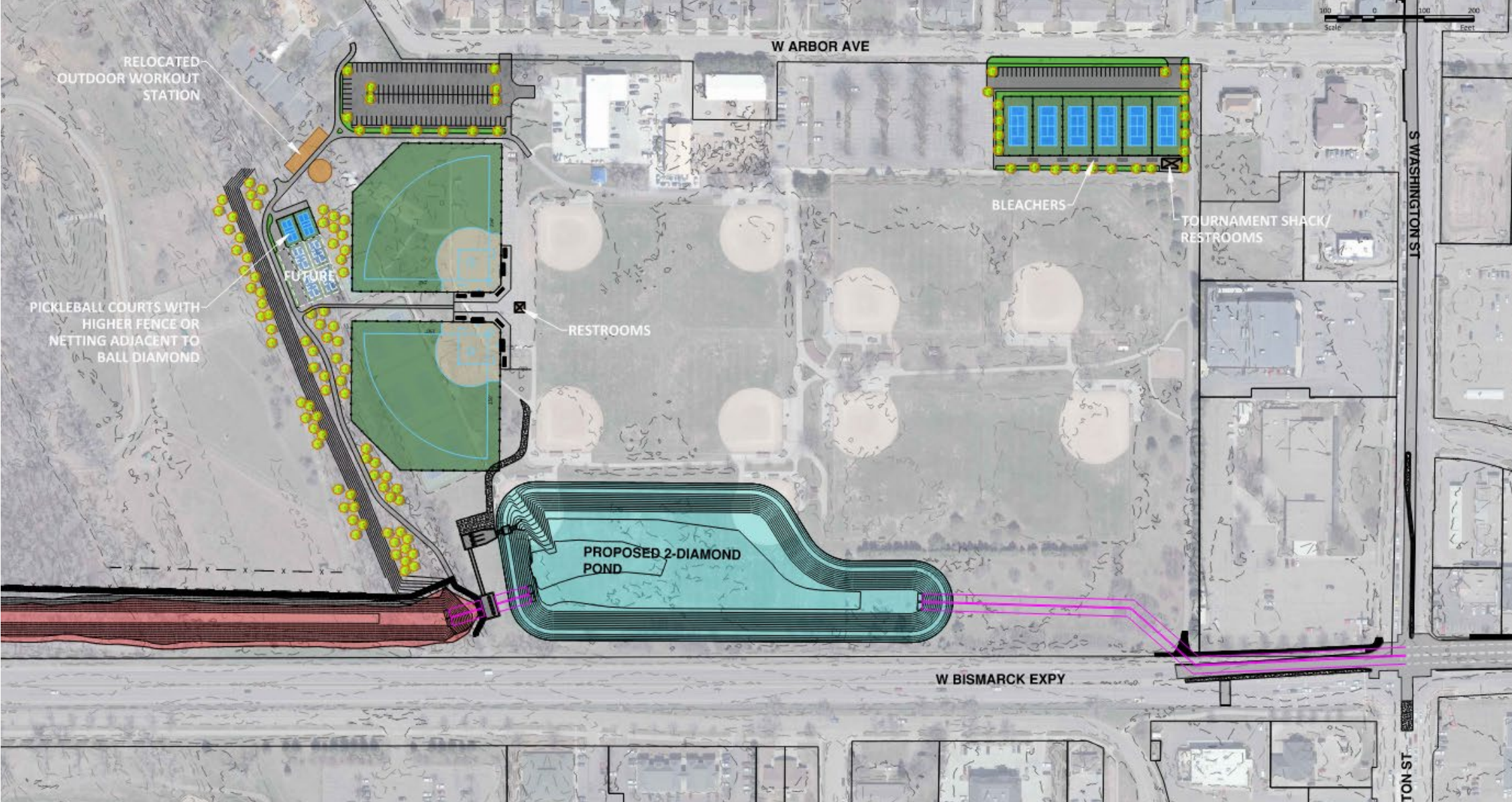
Parking

Soccer



# Option 1A

- NOTES:
1. ALL IMPACTED FACILITIES WILL BE REPLACED AT A MINIMUM 1:1 RATIO.
  2. PARKING WILL BE REPLACED AT A MINIMUM 1:1 RATIO.



RELOCATED  
OUTDOOR WORKOUT  
STATION

PICKLEBALL COURTS WITH  
HIGHER FENCE OR  
NETTING ADJACENT TO  
BALL DIAMOND

FUTURE

RESTROOMS

PROPOSED 2-DIAMOND  
POND

BLEACHERS

TOURNAMENT SHACK/  
RESTROOMS

W BISMARCK EXPY

W ARBOR AVE

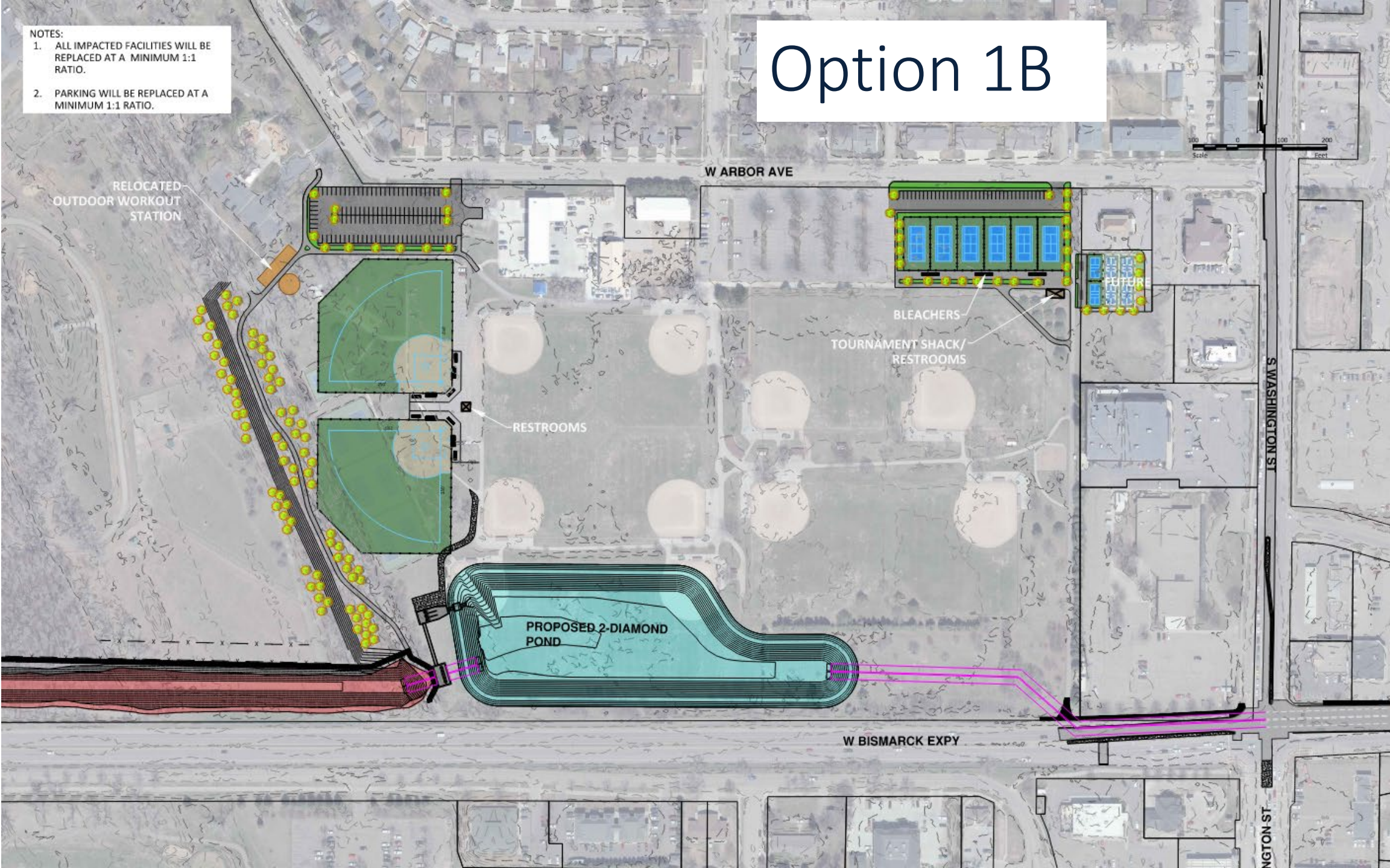
S WASHINGTON ST

WASHINGTON ST



# Option 1B

- NOTES:
1. ALL IMPACTED FACILITIES WILL BE REPLACED AT A MINIMUM 1:1 RATIO.
  2. PARKING WILL BE REPLACED AT A MINIMUM 1:1 RATIO.



RELOCATED  
OUTDOOR WORKOUT  
STATION

W ARBOR AVE

BLEACHERS  
TOURNAMENT SHACK/  
RESTROOMS

RESTROOMS

PROPOSED 2-DIAMOND  
POND

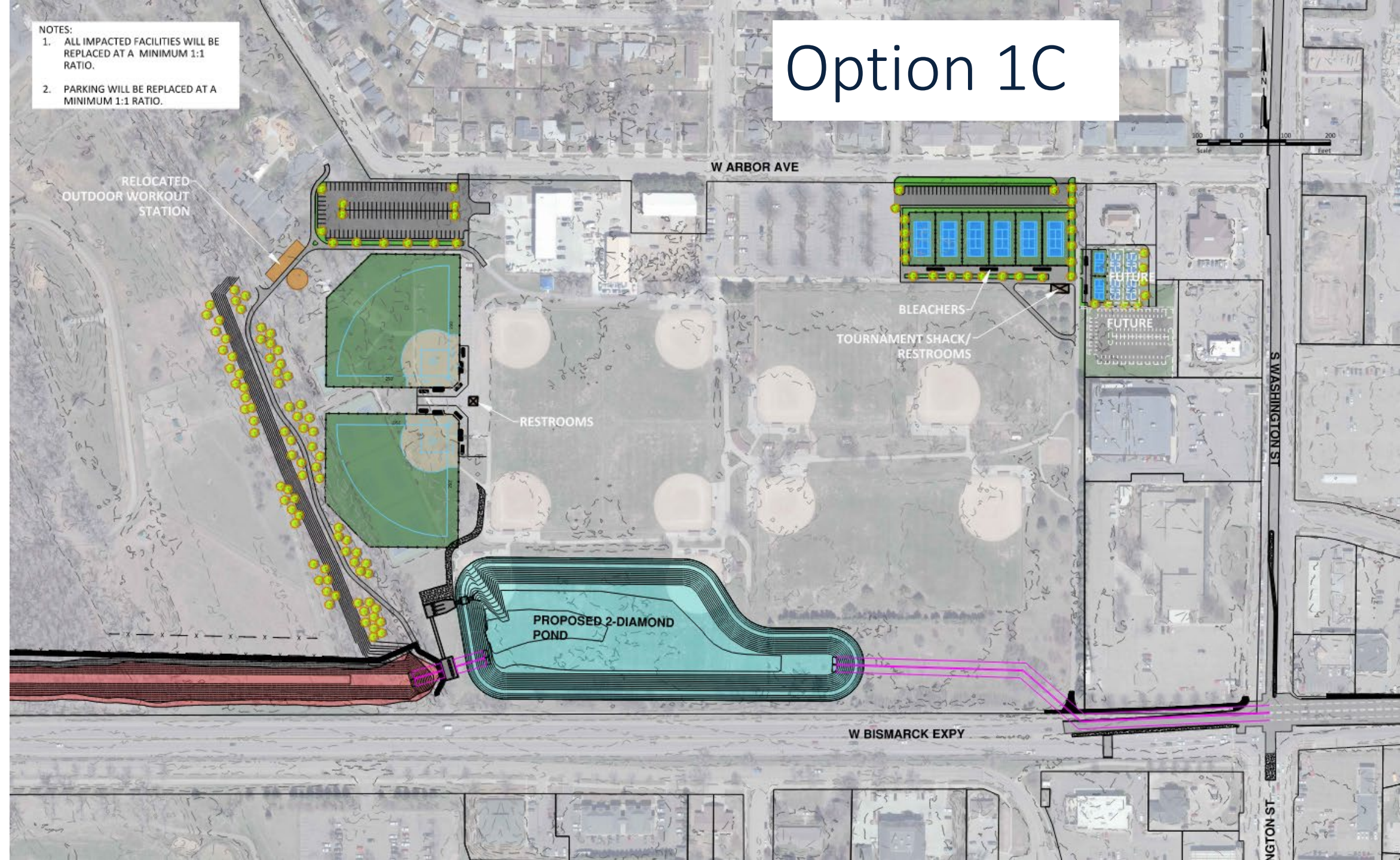
W BISMARCK EXPY

S WASHINGTON ST

NGTON ST

- NOTES:
1. ALL IMPACTED FACILITIES WILL BE REPLACED AT A MINIMUM 1:1 RATIO.
  2. PARKING WILL BE REPLACED AT A MINIMUM 1:1 RATIO.

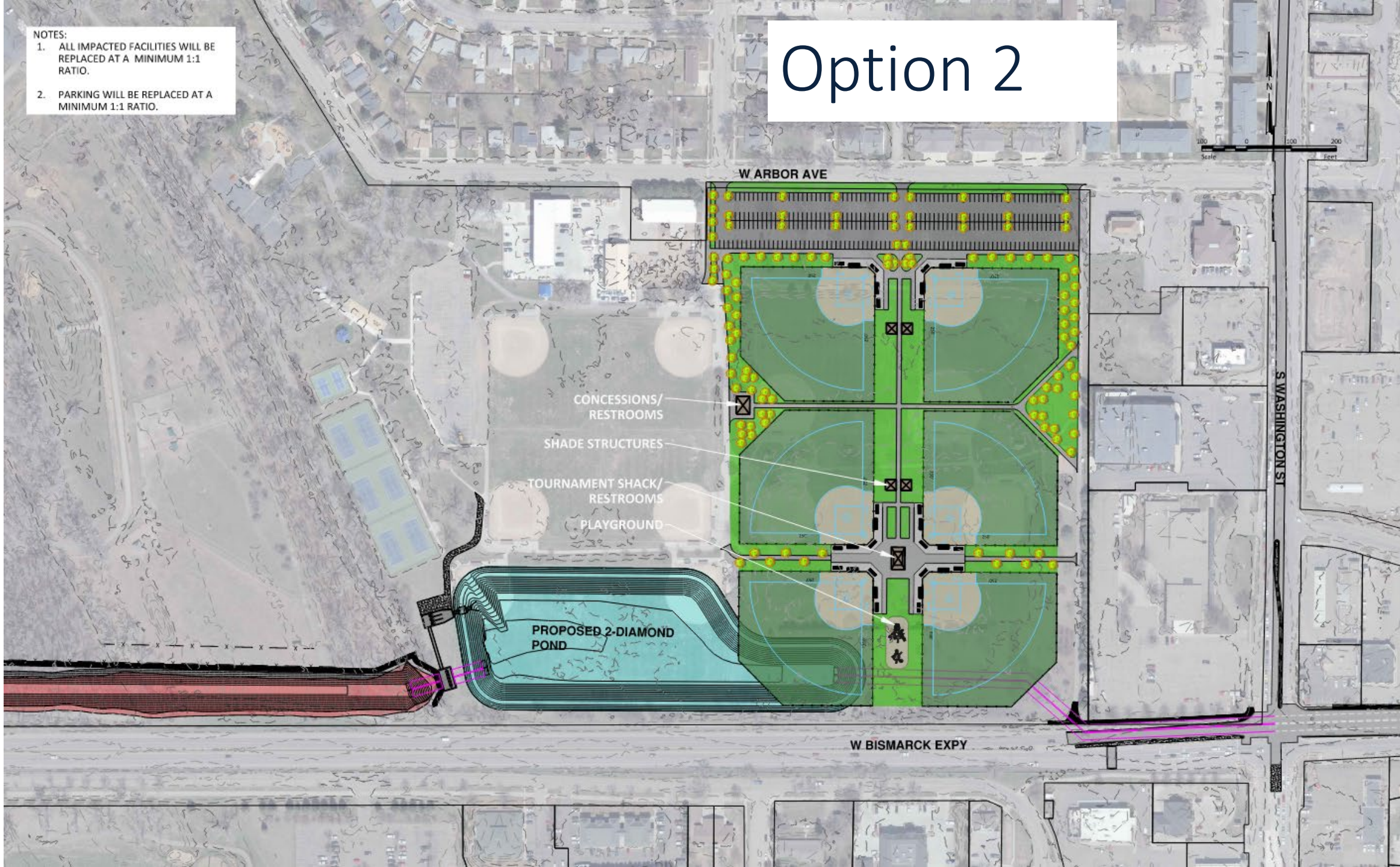
# Option 1C



NOTES:

1. ALL IMPACTED FACILITIES WILL BE REPLACED AT A MINIMUM 1:1 RATIO.
2. PARKING WILL BE REPLACED AT A MINIMUM 1:1 RATIO.

# Option 2



W ARBOR AVE

CONCESSIONS/  
RESTROOMS

SHADE STRUCTURES

TOURNAMENT SHACK/  
RESTROOMS

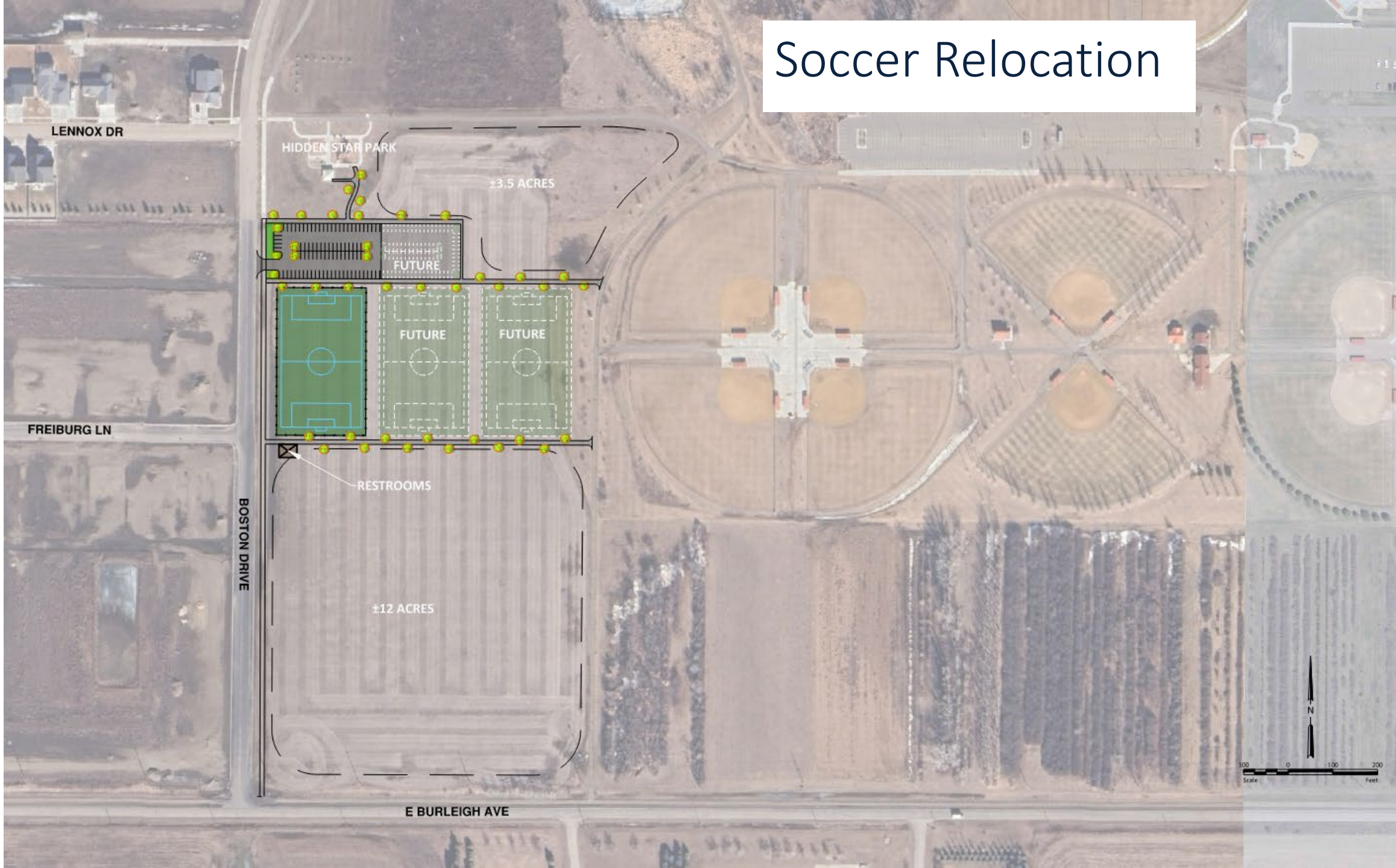
PLAYGROUND

PROPOSED 2-DIAMOND  
POND

S WASHINGTON ST

W BISMARCK EXPY

# Soccer Relocation



LENNOX DR

HIDDEN STAR PARK

±3.5 ACRES

FUTURE

FUTURE

FUTURE

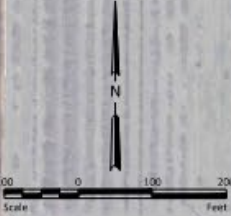
FREIBURG LN

RESTROOMS

BOSTON DRIVE

±12 ACRES

E BURLEIGH AVE



NOTES:

1. ALL IMPACTED FACILITIES WILL BE REPLACED AT A MINIMUM 1:1 RATIO.
2. PARKING WILL BE REPLACED AT A MINIMUM 1:1 RATIO.



RELOCATED  
OUTDOOR WORKOUT  
STATION

FUTURE

PICKLEBALL COURTS WITH  
HIGHER FENCE OR  
NETTING ADJACENT TO  
BALL DIAMOND

RESTROOMS

PROPOSED MULTI-USE TRAIL

RELOCATED FENCE

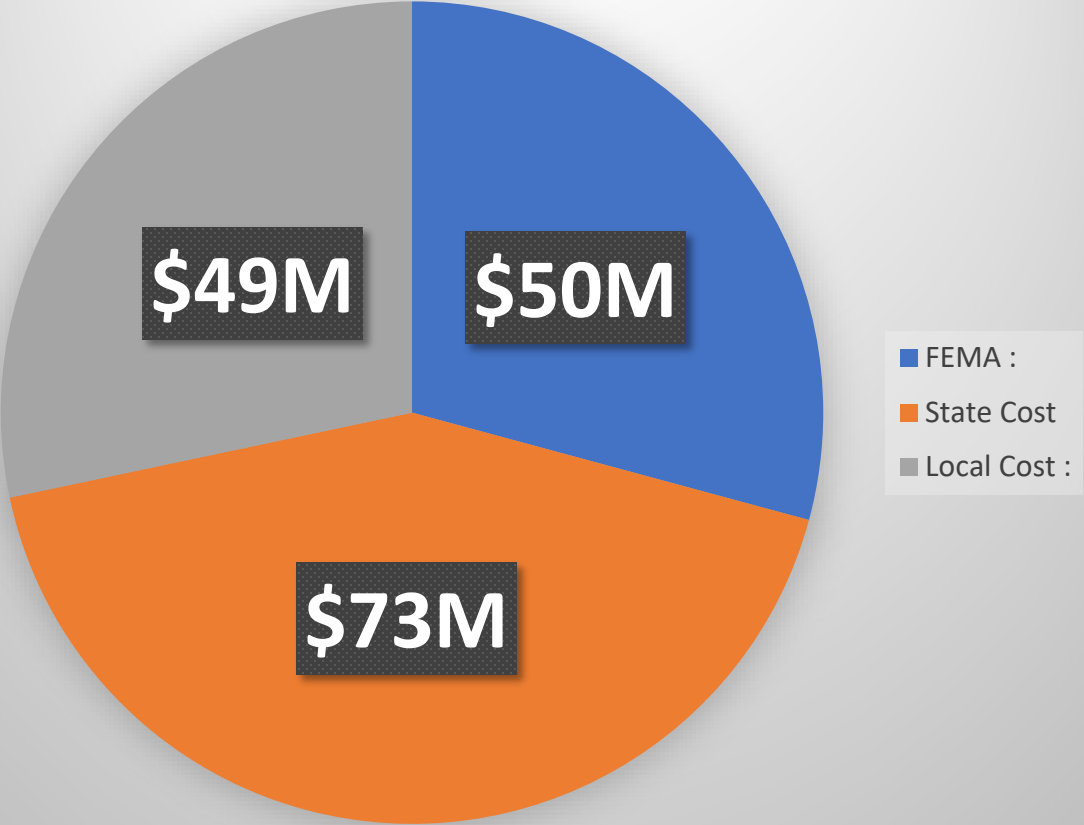
PROPOSED 2-DIAMOND  
POND

PROPOSED DITCH

W BISMARCK EXPY

# Funding & Timeline

Proposed Funding – \$172M



- FY24 FEMA Award
  - Spend down by FY27
- Final Design 2025 and 2026
- Anticipated Construction 2027 & 2028 & 2029

Q&A







# Next Steps

- [www.bismarcknd.gov/floodresources](http://www.bismarcknd.gov/floodresources)
- Project Survey: [www.surveymonkey.com/r/bprdfloodcontrolweb](http://www.surveymonkey.com/r/bprdfloodcontrolweb)
  - Closes Dec. 30 at 5pm
- Input presented to BPRD Board